

Additional distributional records of *Pogostemon heyneanus* Benth and *Orthosiphon thymiflorus* (Roth) Sleesen family Lamiaceae to the flora of Nashik district, from Kalwan Tehsil, district Nashik (Maharashtra)

Deore Sonali Vishnu^{1*}, Mangala Dala Sonawane²

¹ Department of Botany, MVP'S, Karmveer Shantaram Bapu Kondaji Wavare (KSKW) College, CIDCO, Nashik, Maharashtra, India

² Department of Botany, MVP'S, KRT Arts, AM Science and BH Commerce (KTHM) College, Nashik, Maharashtra, India

Abstract

During the field studies carried out in Kalwan tehsil of Nashik district Maharashtra, for exploring the flora used by the ethnic tribes of Kalwan, two plant species belonging to family Lamiaceae namely *Pogostemon heyneanus* Benth. and *Orthosiphon thymiflorus* (Roth) Sleesen were reported as additional distribution record to flora of Nashik district.

Keywords: Kalwan Tehsil, additional distribution record, ethnic tribes

Introduction

Lamiaceae is an important family having wide distribution and is represented fairly in Nashik district. During the field studies carried out by the authors two plants species *Pogostemon heyneanus* Benth and *Orthosiphon thymiflorus* (Roth) Sleesen belonging to Lamiaceae were recorded. After going through the available literatures it was found that this is new distributional record for the flora of Nashik district.

Methodology

Study area

Kalwan Tehsil is present in the north western fringes of Nashik district in Northern Maharashtra. Lying in between 20°29'25"N Latitude and 74°01'35"E Longitude Bordered

by Dang district of Gujarat state towards west, Satana towards north, Deola towards east and Chandwad and Dindori towards south. On the Northern side is the Baglan–Satana and the Selbari range, while on the South is the Satmala range. Some high peaks are Premgiri fort (2759 ft. from M.S.L.) Kandala fort (3435 ft. from M.S.L.), Mohandari fort (3900 ft. from M.S.L.) Saptashrunji (4659ft) and Markandey (4384). The main river is the Girna which originates at the Kem Mountain.

Field excursions were carried out in the study area during various seasons. The specimens collected were dried for making herbarium by employing methods of Rao and Jain (1971). Plants were identified by referring Floras, websites and research papers.

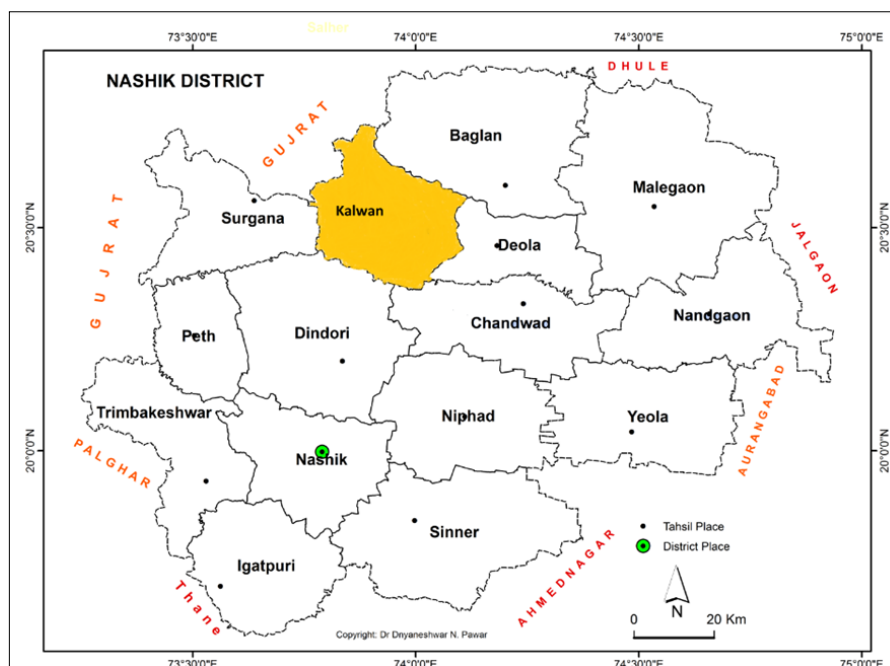


Fig 1: Map of Maharashtra showing distribution of forest

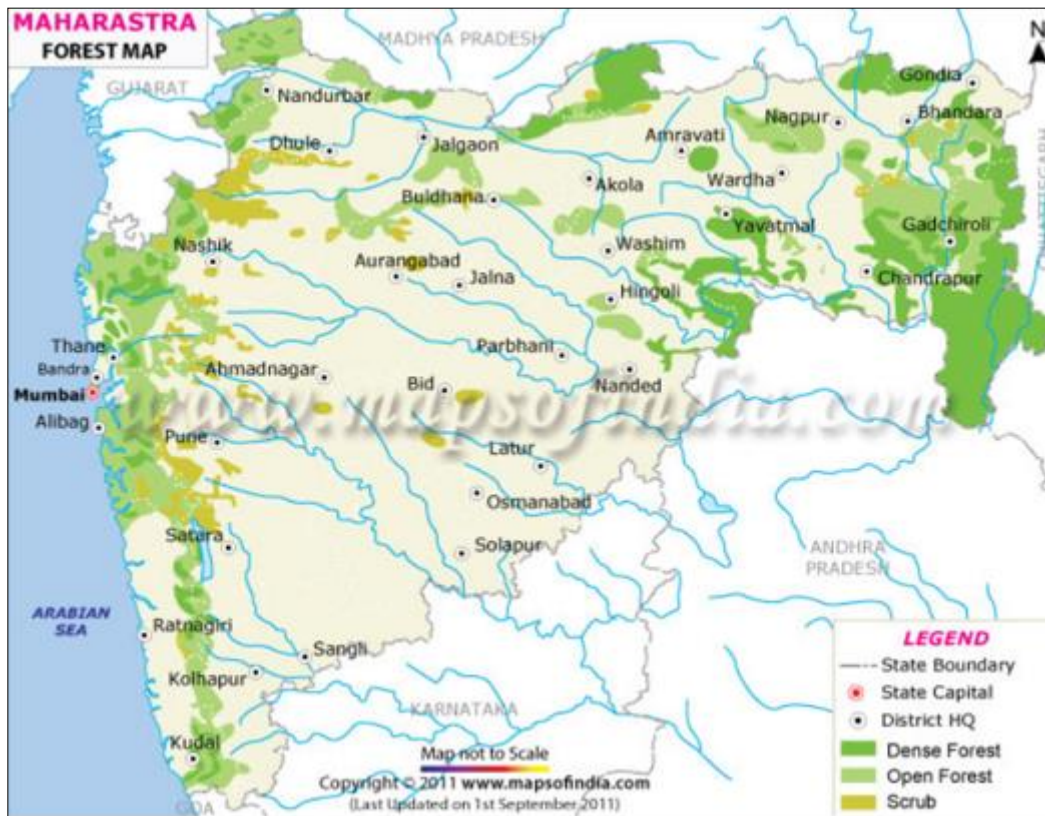


Fig 2: Kalwan tehsil map

Observations

Two plant species namely *Pogostemon heyneanus* Benth and *Orthosiphon thymiflorus* (Roth) Sleesen were recorded, the description of which is given herewith.

***Pogostemon heyneanus* Benth**

Erect or ascending herb up to 2 ft tall. Stem hairy branched, leaves petiolate ovate margins toothed base rounded, apex acute, highly aromatic Flowers white arranged in axillary or terminal spikes. Bracts ovate-lanceolate almost equal to calyx. Filaments bearded.

Dist:-Jaidar Date:-24/01/2021



Fig 3

***Orthosiphon thymiflorus* (Roth) sleesen**

Perennial sub-shrubs 1.5 tall. Stem branched ascending to erect, quadrangular, pubescent along angles. Leaves opposite petiolate, ovate to elliptic. Glabrous or pubescent above and pubescent below. Margins distantly toothed. Flowers pinkish white in loose spike. Bracts ovate triangular.

Dist:- Jamshet Date:-19/08/2021



Fig 4

Result and Discussion

Pogostemon heyneanus Benth and *Orthosiphon thymiflorus* (Roth) Sleesen are reported as additional distribution record to flora of Nashik District. Both these plants belong to

family Lamiaceae. *Pogostemon heyneanus* Benth contains volatile oil whereas *Orthosiphon thymiflorus* (Roth) Sleesen has medicinal properties. If these are brought under cultivation it would prove as a boon to the tribal people who depend on agriculture for their livelihood.

References

1. Gaikwad SP, Gore RD, Garad KU, Randive SD. New plant records for the Marathwada region of Maharashtra, India. Journal of Threatened Taxa, 2014;6(6):5878-5886. <http://dx.doi.org/10.11609/JoTT.o3435.5878-86>.
2. Murugan R, Mallavarapu GR, Padmashree KV, Rao RR, Livingstone C. Volatile oil composition of *Pogostemon heyneanus* and comparison of its composition with patchouli oil. Nat Prod Commun. PMID: 21299132, 2010;5(12):1961-4.
3. Mukesh K. Singh, Bina Gidwani, Anshita Gupta, Hemant Dhongade, Chanchal Deep Kaur *et al.* A Review of the Medicinal Plants of Genus *Orthosiphon* (Lamiaceae). International Journal of Biological Chemistry, 2015;9:318-331.
4. Singh NP. Flora of Maharashtra Volume 2 Botanical Survey of India, 2001
5. Santosh Yadav, Dhanke PB. A check list of Plants of Nashik District, Nashik Forest Circle.
6. <https://www.flowersofindia.net>
7. <https://indiabiodiversity.org>