



---

## Ethnomedicinal herbs used by the different ethnic communities of Assam

Gunamoni Das\*, Nitul Jyoti Das

Department of Botany, Assam Down Town University, Panikhaiti, Guwahati, Assam, India

---

### Abstract

Assam is bestowed with rich plant resources and its varied physiography as well as unique floristic and faunistic diversities represents an important biodiversity hotspot zone in the world. 5725 endemic plant species have been listed from India, North East shares approximately 1808 species, which is largest concentration of endemic species in India. Assam is promising in its biodiversity having immense promise for sustainable use and conservation of available biological resources. Botanical Survey of India (BSI), Universities, Colleges and other research organizations of Assam are associated in depicting the floral diversity of Assam. However, the endeavour thought not yet complete, has led to discovery of new species over the years. Assam contributes approximately 2000-3000 species of medicinal plants (Nath, 1975, 1976). The physiographic divisions i.e. NC Hills, Brahmaputra valley, Barak valley, Himalayan foot hills and diversity of ethnic people's faith, beliefs, experience on plants from generations make the region a spectacular treasure house of medicinal plants. Different ethnic communities are associated with locally available ethnomedicinal herbs in their daily lives in respect to therapeutic use as botanicals. They have gained the knowledge on these ethnomedicinal herbs that exists naturally around their local forest areas. They have some traditional knowledge on the use of different medicinal plants and plant parts and their use in folklore practices.

**Keywords:** ethnomedicinal herbs, ethnic community, healthcare, Assam

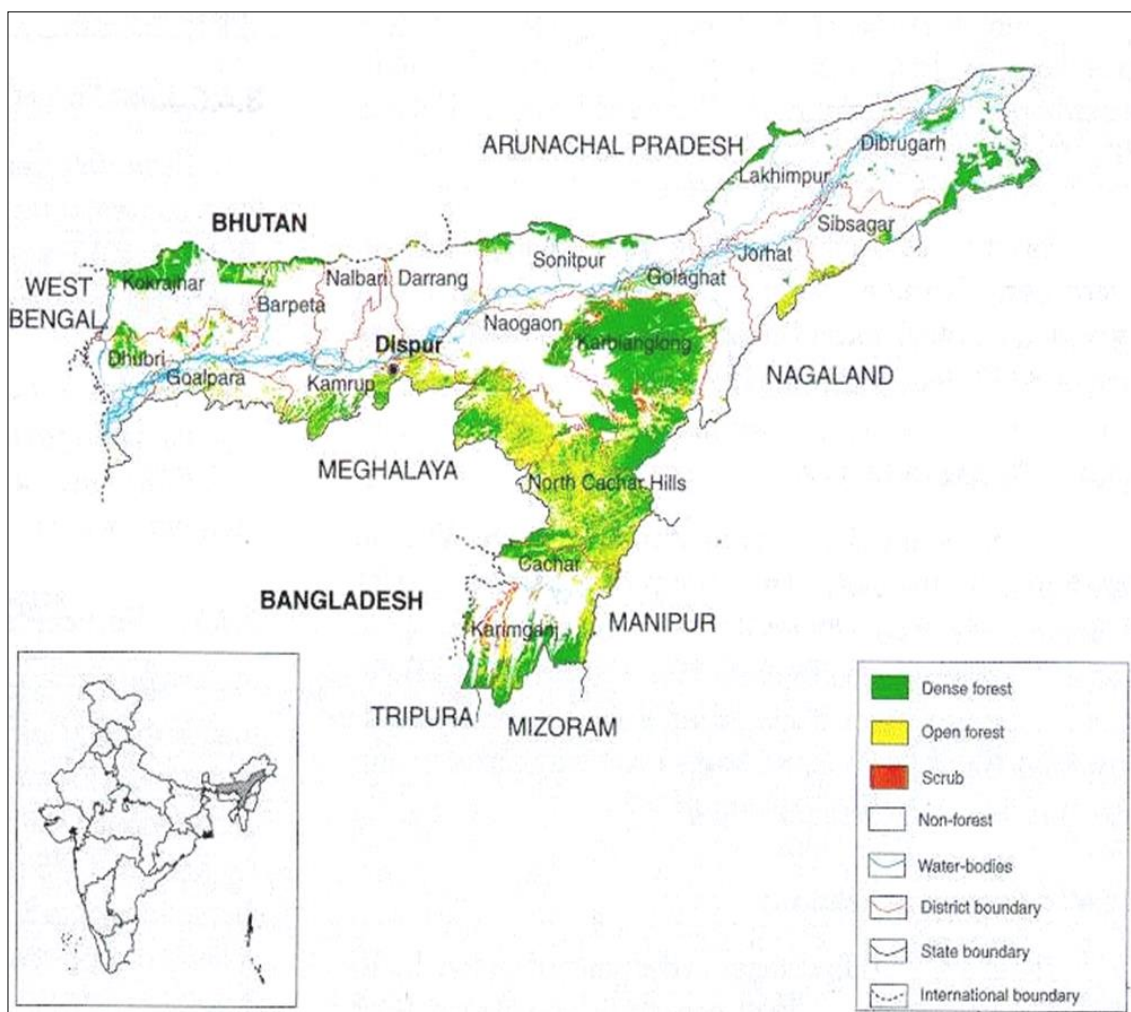
---

### Introduction

Assam is rich in forest resources. The forest cover of Assam extends up to 35.48% of the total geographic area. As per estimate of the State Forest Department, the total area under Reserved Forest is 14,066.43 sq. km, while the area under proposed Reserved Forest constitutes 59%, protected forest 13% and unclassed forest 28%. Among the type of forest of the state the Tropical Wet Evergreen, Tropical Semi-Evergreen, Tropical Moist Deciduous, Sub Tropical Broad Leaved Hill, Sub Tropical Pine and Littoral and Swamp Forests are most observed. The forests of Assam are the natural habitats of MAPs. Surveys are needed to be carried out in all the forest types available in Assam, at different habitats within the forest and at different altitudes. In these natural sites, it is important to consider the ecological requirement of important as well as endangered medicinal plants. Density of the medicinal plant population and biotic and abiotic pressures, if any, may also be considered for recording. The representative information, on ecological requirement, microhabitats of MAP, will be helpful for conservation and even commercial cultivation of these selected plant species.

### Methodology

A scientific study area was carried out from 1<sup>st</sup> April' 2019 to August 2021. The standard scientific data collection methods have been followed to document the indigenous knowledge of medicinal plants of the ethnic community. The techniques employed for data collection were interviews, group discussion, guided field walks, and observations with participants. Plant-based formulations are believed to be safer and such getting world-wide importance and popularity. There are numerous plant species in Assam which are having a great medicinal value. It is very much necessary to study their characterization and identification of chemically active compounds which need to be isolated and tested against the ailments. The plant specimens were confirmed, collected and preserved during the field activities and kept it as record for identification. Identification of plant specimens was initiated during the field experiment and in the herbarium sheet. Identification was also carried out using Flora of Assam comparing with already identified specimens. Finally, the identified specimens were stored at the Botany laboratory of Assam Down Town University.



**Fig 1:** Some important medicinal plants occurring in Assam

## Result

The world's indigenous medicinal plants often lead to the belief of some supernatural cures and miraculous. In earlier days, most of medicine suggested and guided by a hermit (folklore practitioner) earned more favour and reputation than the one based on some test and experience. As times changed and man started weighing everything on the scales of reasoning, several of earlier beliefs seemed unsound and despite their golden past, the use of ethnomedicinal herbs declined in most of the places. But few of the practices still have their faith among the ethnic communities and it is possible such beliefs suited the conditions and mental attitudes of the ethnic communities living in the remote areas. Most of the indigenous medicinal plants were collected from wild and most of the herbal formulations were obtained from trees, herbs, small shrubs and climber plants. The stems or stem barks and roots were the most commonly used plant part to prepare medicine. The recorded ethnomedicinal herbs are listed in the below mentioned table

**Table 1**

Sl. No.	Botanical Name	Common Name	Family	Habitat	Plant arts used
1	<i>Abroma angusta</i> L.	Bonkopahi	Sterculiaceae	Shrub	Root
2	<i>Abrus precatorious</i> L.	Latumani	Leguminosae	Climber	Root, seed, leaf
3	<i>Acacia farnesiana</i> Wild.	Toruakadam	Leguminosae	Tree	Bark, flower
4	<i>Acacia pinnata</i> Willd.	Kuchai	Leguminosae	Climber	Leaf, bark, fruit
5	<i>Acorus calamus</i> L.	Boch	Araceae	Herb	Rhizome
6	<i>Adhatoda vasica</i> Nees.	Bahaka	Acanthaceae	Shrub	Root, Leaf
7	<i>Aegle mermelos</i> Corr.	Bell	Rutaceae	Tree	Fruit, Leaf
8	<i>Albizia lebbek</i> Benth.	Kothia koro	Leguminosae	Tree	Seed, bark, flower, leaf
9	<i>Allium sativum</i> L.	Naharu	Liliaceae	Herb	Bulb
10	<i>Alocacia indica</i> (Roxb.) Schott.	Mankachu	Araceae	Herb	Leaf, stem
11	<i>Alocacia macrorrhiza</i> Schott.	Bor kachu	Araceae	Herb	Stem, Corm
12	<i>Aloe barbadensis</i> Mill.	Chal kuori	Liliaceae	Herb	Leaf

13	<i>Alpinia allughas</i> Rosc.	Deo tora	Zingiberaceae	Herb	Fruit, Rhizome
14	<i>Alpinia galanga</i> Willd.	Sugandha Vacha	Zingiberaceae	Herb	Rhizome
15	<i>Alstonia scholaris</i> R. Br.	Chatian	Apocynaceae	Tree	Bark
16	<i>Alternanthera sessilis</i> L.	Matikaduri	Amaranthaceae	Herb	Shoots, Leaf
17	<i>Altingia excelsa</i> Noron.	Jutuli	Altingiaceae	Tree	Wood
18	<i>Amaranthus spinosus</i> L.	Hati khoitora	Amaranthaceae	Herb	Whole plant
19	<i>Amomum aromaticum</i> Roxb.	Moran elachi	Zingiberaceae	Herb	Fruit
20	<i>Amorphophalus campanulatus</i> (Roxb.) Blume.	Ol kachu	Araceae	Herb	Corm
21	<i>Andrographis paniculata</i> Nees.	Kalmegh	Acanthaceae	Herb	Roots, Leaves
22	<i>Aquilaria agallocha</i> Roxb.	Sasi	Thymelaeaceae	Tree	Bark, wood
23	<i>Areca catechu</i> Linn.	Tamul	Palmeae	Tree	Seeds/nuts
24	<i>Argemone maxicana</i> L.	Sialkata	Papavaraceae	Shrub	Seeds
25	<i>Aristolochia indica</i> L.	Iswarmool	Aristolochiaceae	Climber	Root
26	<i>Artemisia vulgaris</i> L.	Nilum	Compositae	Herb	Stem, Flowers
27	<i>Artocarpus heterophyllus</i> Lam.	Kothal	Moraceae	Tree	Leaf, seed
28	<i>Asperagus racemosus</i> Willd.	Satamul	Liliaceae	Climber	Rhizome
29	<i>Averrhoa carambola</i> Linn.	Kordoi	Oxalidaceae	Tree	Fruit
30	<i>Azadirachta indica</i> A. Juss.	Neem	Meliaceae	Tree	Leaves, Seeds
31	<i>Bacopa monnieri</i> L.	Brahmi	Scrophulariaceae	Herb	Whole Plant
32	<i>Barleria cristata</i> L.	Jhinli	Acanthaceae	Shrub	Leaf
33	<i>Bauhinia purpurea</i> L.	Ronga kanchan	Liguminosae	Tree	Bark, root, flower
34	<i>Boerhaavia diffusa</i> L.	Punarnua	Nyctaginaceae	Herb	Whole plant
35	<i>Bombax ceiba</i> DC.	Simalu	Bombacaceae	Tree	Bark, root
36	<i>Bryophyllum calycinum</i> Salib	Pategoja	Crassulaceae	Herb	Leaves
37	<i>Butea frondosa</i> Roxb.	Palas	Leguminosae	Tree	Flower, Leaves, Seeds
38	<i>Caesalpinia bonducella</i> Flem.	Letaguti	Leguminosae	Shrub	Seeds, leaves
39	<i>Calotropis gigantea</i> (L.) R.Br.ex. Ait	Akon	Asclepiadaceae	Shrub	Roots, Flower, Leaves
40	<i>Calotropis procera</i>	Akon	Asclepiadaceae	Shrub	Roots, Flower, Leaves
41	<i>Camellia chinensis</i> (L) Kuntz	Chah gach	Theaceae	Shrub	Leaves
42	<i>Cannabis sativa</i> L.	Bhang			
43	<i>Cardiospermum helicacabum</i> L.	Kopalputa	Sapindaceae	Climber	Whole plant
44	<i>Cassia alata</i> L.	Khargash	Leguminosae	Shrub	Leaves
45	<i>Cassia fistula</i> L.	Sonaru	Leguminosae	Tree	Roots, Fruits, Leaves
46	<i>Cassia occidentalis</i> L.	Medelwa	Liguminosae	Shrub	Leaf, root, flower
47	<i>Cassia sophera</i> L.	Medlwa	Liguminosae	Shrub	Leaf, root, flower
48	<i>Cassia tora</i> L.	Hekotimah	Leguminosae	Shrub	Leaves, Flower, Root
49	<i>Catharanthus roseus</i> (L.) G. Don	Nayantora	Apocynaceae	Shrub	Leaves
50	<i>Centela asiatica</i> (L.) Urban	Bor-manimuni	Umbelliferae	Herb	Whole plant
51	<i>Chenopodium album</i> L.	Jilmil sak	Chenopodiaceae	Herb	Whole plant
52	<i>C. ambrossoides</i> L.	Jilmil	Chenopodiaceae	Herb	Whole plant
53	<i>Cinnamomum camphora</i> (L.) Nees	Karpur	Lauraceae	Tree	Leaves, Flower
54	<i>C. sulphuratum</i> Nees.	Dalchini	Lauraceae	Tree	Leaves, Bark
55	<i>C. tamala</i> Nees	Tejpat	Lauraceae	Tree	Leaves, Flower
56	<i>Cissus quadrangularis</i> L.	Harjora	Vitaceae	Climber	Whole plant
57	<i>Cleome viscosa</i> Linn.	Boga bhutmula	Capparidaceae	Shrub	Seed, leaf
58	<i>Clerodendrum colebrookianum</i> Walp.	Nephaphu	Verbenaceae	Shrub	Leaves
59	<i>C. indicum</i> (L.) Kuntze	Brahmajasth	Verbenaceae	Shrub	Root, leaf, stem
60	<i>C. inerme</i> (L.) Gaertn.	Bonjooi	Verbenaceae	Shrub	Root, leaf, stem
61	<i>C. infortunatum</i> (L.) Gaertn.	Dhopat tita	Verbenaceae	Shrub	Leaf, root
62.	<i>Clitoria ternatea</i> Linn.	Oporajita	Liguminosae	Climber	Leaf
63	<i>Coriandrum sativum</i> Linn.	Dhonia	Umbelliferae	Herb	Fruit
64	<i>Costus speciosus</i> Smith.	Jamlakhuti	Costaceae	Shrub	
65	<i>Croton caudatus</i> Geisel.	Lota mahudi	Euphorbiaceae	Shrub	Whole plant
65	<i>Croton tiglium</i> L.	Koni-bih	Euphorbiaceae	Tree	Seeds, Stems
67	<i>Curcuma amada</i> L.	Amada	Zingiberaceae	Herb	Rhizome
68	<i>C. aromatica</i> Salisb.	Bon-halodhi	Zingiberaceae	Herb	Rhizome
69	<i>C. caesia</i> Roxb.	Kolahalodhi	Zingiberaceae	Herb	Rhizome
70	<i>C. longa</i> L.	Halodhi	Zingiberaceae	Herb	Rhizome

71	<i>C. zadoaria</i> Rosac.	Kochura	Zingiberaceae	Herb	Rhizome
72	<i>Cynodon dactylon</i> (L.) Pers.	Dubari-ban	Poaceae	Herb	Whole Plant
73	<i>Cyperus rotundus</i> L.	Mutha	Poaceae	Herb	Tubers
74	<i>Cymbopogon pendulus</i> (Nees. Ex. Steud.)	Gundh-birina	Poaceae	Herb	Leaves
75	<i>C. flexuosus</i> (Nees. Ex. Steud.)	Gundhi-birina	Poaceae	Herb	Leaves
76	<i>C. khasianua</i> (Munro ex Steud) Borr	Gundhi-birina	Poaceae	Herb	Leaves
77	<i>Datura fastuosa</i> L.	Datura	Solanaceae	Shrub	Seed, Fruit, Leaves
78	<i>D. stramonium</i> L.	Kola-datura	Solanaceae	Shrub	Seed, Roots
79	<i>Desmodium gangeticum</i> D.C.	Shalaparni	Leguminosae	Herb	Root
80	<i>Dillenia indica</i> Linn.	Ou tenga	Dilleniaceae	Tree	Fruit, flower
81	<i>Dioscorea alata</i> L.	Kathalu	Dioscoriaceae	Climber	Tuber
82	<i>D. bulbifera</i> Linn.	Gothia alu	Dioscoriaceae	Climber	Tuber
83	<i>Dracaena angustifolia</i> Roxb.	Jomlakhuti	Liliaceae	Tree	Bark
84	<i>Drymaria cordata</i> Willd.	Lai jabori	Caryophyllaceae	Herb	Whole plant
85	<i>Eclipta alba</i> Hassk.	Keheraj	Asteraceae	Herb	Leaf
86	<i>Embelia ribes</i> Burn.	Bokul-tata	Myrsinaceae	Shrub	Fruits, Roots
87	<i>Emblica officinalis</i> Gaerth.	Amlakhi	Euphorbiaceae	Tree	Fruit, Bark, Leaves
88	<i>Eupatorium cannabinum</i> Linn.	Tongloti	Asteraceae	Shrub	Leaf
89	<i>Eupatorium odoratum</i> Linn.	Jarmani bon	Asteraceae	Shrub	Leaf
90	<i>Euphorbia hirta</i> Linn.	Dudhbon	Euphorbiaceae	Herb	Whole plant
91	<i>E. neriifolia</i> L.	Hiju	Euphorbiaceae	Shrub	Root
92	<i>Euryale ferox</i> Salisb.	Nikori	Nymphaeaceae	Herb	Seed, stem, root
93	<i>Ficus bengalensis</i> L.	Bot	Moraceae	Tree	Bark
94	<i>F. benjamina</i> Willd.	Jori goch	Moraceae	Tree	Stem, bark, root, leaf
95	<i>F. hispida</i> Linn.	Kothia dimoru	Moraceae	Tree	Bark, fruit
96	<i>F. religiosa</i> L.	Ahot	Moraceae	Tree	Bark, Fruit
97	<i>Flemingia strobilifera</i> R. Br.	Makhioti	Leguminosae	Shrub	Leaf, flower
98	<i>Garcinia cowa</i> Roxb.	Kuji thekera	Guttiferae	Tree	Fruit, leaf
99	<i>G. lanceaefolia</i> Roxb.	Rupahi thekera	Guttiferae	Tree	Fruit
100	<i>G. morella</i> Desv.	Kuji thekera	Guttiferae	Tree	Fruit
101	<i>G. pudunculata</i> Roxb.	Bor thekera	Guttiferae	Tree	Fruit
102	<i>Gardenia campanulata</i> Roxb.	Bihmona	Rubiaceae	Shrub	Fruit
103	<i>Gloriosa superba</i> Linn.	Kalihari	Liliaceae	Herb	Root
104	<i>Glycyrrhiza glabra</i> L.	Justimadhu	Leguminosae	Climber	Root
105	<i>Hedychium spicatum</i> (H) ex. Smith	Dui			
106	<i>Hibiscus rosa-sinensis</i> Linn.	Joba phool	Malvaceae	Shrub	Petal, flower, bud, root
107	<i>Holarrhena antidysentica</i> Wall.	Kutach	Apocynaceae	Tree	Bark, Seed
108	<i>Homonioia riparia</i> Lour.	Silchompa	Euphorbiaceae	Tree	Root, Fruit stone
109	<i>Houttuynia cordata</i> Thumb.	Mochondori	Piperaceae	Herb	Whole plant
110	<i>Jatropha curcas</i> L.	Bangali era	Euphorbiaceae	Tree	Seed, Root, Leaves
111	<i>J. gossypifolia</i> L.	Bangali era	Euphorbiaceae	Tree	Seed, Root, Leaves
112	<i>Justicia gendarussa</i> (L.) Burm.	Titakhari	Acanthaceae	Shrub	Whole plant
113	<i>Lagenaria siceraria</i> (Mol) Standle.	Jati lao	Cucurbitaceae	Climber	Seed, fruit
114	<i>Lagerstroemia flos-reginae</i> Retz.	Ajar	Lythraceae	Tree	Bark, leaf, root
115	<i>Laportea crenulata</i> Gaud.	Bor chorat	Urticaceae	Shrub	Root
116	<i>Lasia spinosa</i> (L) Thw.	Sengmora	Araceae	Herb	Root, leaf
117	<i>Lawsonia inermis</i> Linn.	Jetuka	Lythraceae	Shrub	Bark, leaf, flower
118	<i>Leucas linifolia</i> Spreng.	Darun	Labiatae	Herb	Leaves
119	<i>Linostoma decandrum</i> Wall.	Bakalbih	Thymelaeaceae	Shrub	Tuber
120	<i>Litsea cubeba</i> Pers.	Mejankari	Lauraceae	Tree	Bark
121	<i>L. monopetala</i> (Roxb.) Pers.	Sualu	Lauraceae	Tree	Bark
122	<i>Melia azedarach</i> L.	Ghora neem	Meliaceae	Tree	Whole plant
123	<i>Mesua ferrea</i> L.	Nahar	Guttiferae	Tree	Flower, Leaves, Seeds
124	<i>Michelia champaka</i> Linn.	Tita chopa	Magnoliaceae	Tree	Flower, fruit
125	<i>Mimosa pudica</i> L.	Lajukilota	Leguminosae	Herb	Leaves
126	<i>Mimusops elengi</i> Linn.	Bokul	Sapotaceae	Tree	Flower, Fruit, Root, seed, leaf
127	<i>Mirabilis jalapa</i> Linn.	Gadhuli gopal	Nyctaginaceae	Shrub	Root
128	<i>Momordica dioica</i> Roxb.	Saru bhatkerela	Cucurbitaceae	Climber	Root, fruit
129	<i>Moringa oleifera</i> L.	Sajina	Moringaceae	Tree	Fruits, Seeds, Barks,

					Roots
130	<i>Morus alba</i> Linn	Boga mulberry	Moraceae	Tree	Leaf, bark, fruit
131	<i>Mucuna pruriens</i> DC	Bandar kekua	Leguminosae	Climber	Roots
132	<i>Murraya koenigii</i> Spreng.	Narasinga	Rutaceae	Shrub	Bark, Root, Leaves
133	<i>M. paniculata</i> (L.) Jac.	Kamini phool	Rutaceae	Shrub	Bark, wood
134	<i>Nasturtium indicum</i> DC. Mod.	Bon sorioh	Cruciferae	Herb	Seed
135	<i>Nelumbo nucifera</i> Gaertn.	Padum phool	Nymphaeaceae	Herb	Anther filament, leaf, seed, root
136	<i>Nerium odorum</i> Soland	Karbi-phul	Apocynaceae	Shrub	Fruit, Root
140	<i>Nyctanthes arbor-tristis</i> L.	Sewali	Oleaceae	Tree	Leaves, Flowers
141	<i>Nymphaea alba</i> Linn.	Boga bheth	Nymphaeaceae	Herb	Root
142	<i>Oscimum basilicum</i> L.	Bon tulasi	Labiatae	Shrub	Seeds, Leaves
143	<i>O. gratissimum</i> L.	Ram tulasi	Labiatae	Shrub	Leaves, Seeds
144	<i>O. sanctum</i> L.	Tulasi	Labiatae	Shrub	Leaves, Seeds, Roots
145	<i>Oldenlandia corymbosa</i> Linn.	Bonjaluk	Rubiaceae	Herb	Whole plant
146	<i>Oroxylum indicum</i> Vent.	Bhat ghila	Bignoniaceae	Tree	Bark, Root, Fruit
147	<i>Oxalis corniculata</i> L.	Semoi tenga	Oxalidaceae	Climber	Whole plant
148	<i>PaedFFFERia foetida</i>	Vedai lota	Rubiaceae	Climber	Whole Plant
149	<i>Peperomia pellucida</i> H.B. & K.	Ponownoa	Piperaceae	Herb	Whole plant
150	<i>Phyllanthus niruri</i> Linn.	Bhumi amlakhi	Euphorbiaceae	Herb	Whole plant
151	<i>Piper betle</i> Linn.	Pan	Piperaceae	Climber	Leaf, stem, root
152	<i>P. longum</i> L.	Pepali	Piperaceae	Climber	Leaves, Spikes, Roots
153	<i>P. nigrum</i> Linn.	Jaluk	Piperaceae	Climber	Fruit
154	<i>Plumbago indica</i> Linn.	Ronga agechita	Plumbaginaceae	Shrub	Root
155.	<i>P. zeylanica</i> L.	Boga agyachita	Plumbaginaceae	Shrub	Root
156	<i>Plumeria acuminata</i> Ait.	Gulanchi	Apocynaceae	Tree	Root
157	<i>Polygonum chinensis</i> Linn.	Modhusoleng	Polygonaceae	Herb	Leaf
158	<i>Pongamia pinnata</i> (L.) Merr.	Korochgoch	Leguminosae	Tree	Leaf, seed
159	<i>Pueraria tuberosa</i> DC	Pani alu	Leguminosae	Climber	Roots
160	<i>Rauwolfia serpentina</i> Benth.	Arachori tita	Apocynaceae	Shrub	Root, Leaves
161	<i>Ricinus communis</i> L	Era	Euphorbiaceae	Shrub	Roots, seeds
162	<i>Rubus moluccanus</i> Linn.	Jetulipoka	Rosaceae	Climber	Fruit, shoot
163	<i>Rubia cordifolia</i> L.	Majathi	Rubiaceae	Shrub	Stem, Roots
164.	<i>Saraca indica</i> Linn.	Ashok	Leguminosae	Tree	Bark
165	<i>Scorparia dulcis</i> L.	Krah-lebekor	Scrophulariaceae	herb	Whole plant
166	<i>Sesbania grandiflora</i> (L.) Pers.	Bok phool	Leguminosae	Shrub	Root, leaf, bark
167	<i>S. cordifolia</i> L.	Boriala			
168	<i>Smilex macrophylla</i> Roxb.	Hasti carnalata	Liliaceae	Climber	Roots
169	<i>Solanum indicum</i> L.	Tit-bhekur	Solanaceae	Shrub	Fruits, Leaves, Roots
170	<i>S. khasianum</i> Clarke.	Kotahi bengana	Solanaceae	Shrub	Fruits, Seeds
171	<i>S. nigrum</i> L.	Latkachu	Solanaceae	Shrub	Root, Fruit
172	<i>S. torvum</i> Sw.	Hati bhekuri	Solanaceae	Shrub	Fruit
173.	<i>S. zanthocarpum</i> L.	Kontakari	Solanaceae	Shrub	Fruits, Leaves, Roots
174	<i>Spilanthes acmella</i> Murr.	Pirazha	Compositae	Herb	Whole plant
175	<i>Spondias pinnata</i> (Koem.) Kurz.	Amara	Anacardiaceae	Tree	Fruit, bark, leaf
178.	<i>Tabernaemontana coronaria</i> Wild.	Kothana phul	Apocynaceae	Shrub	Root
179	<i>Tamarindus indica</i> L.	Teteli	Leguminosae	Tree	Fruits, Flowers, Leaves, Seeds
180	<i>Tectona grandis</i> Linn.	Sagoon	Verbenaceae	Tree	Wood
181	<i>Terminalia arjuna</i> W & A	Arjun goch	Combretaceae	Tree	Leaves, Bark
182	<i>T. belerica</i> Roxb.	Bhomora	Combretaceae	Tree	Fruit
183	<i>T. chebula</i> Retz.	Shilikha	Combretaceae	Tree	Leaves, fruits
184	<i>Thevetia nerifolia</i> Duss.	Karabi	Apocynaceae	Shrub	Seeds
185	<i>Tinospora cordifolia</i> (Willd)	Saguni lota	Menispermaceae	Climber	Stem, Root
186.	<i>Tylophora indica</i> Mirr.	Antamul	Asclepiadaceae	Herb	Leaves
187	<i>Typhonium trilobatum</i> Schott.	Samakachu			
188	<i>Vitex negundo</i> L.	Pasatia	Verbenaceae	Shrub	Leaves
189	<i>Wadelia calandulacea</i> Lees.	Mahabhringaraj	Compositae	Shrub	Whole plant
190	<i>Xanthium strumarium</i> L.	Agara	Compositae	Shrub	Whole plant
191	<i>Zanthoxylum budrunga</i> Wall.	Mejenga	Rutaceae	Tree	Fruit, leaf
192	<i>Zingiber officinalis</i> L.	Adda	Zingiberaceae	Shrub	Rhizome

### Conclusion

Medicinal plants are considered very important in primary health care system. There are more than thousands of medicinal plants known for their medicinal properties. The present study shows a high degree of reliance of the people from ethnic communities of Assam in the traditional forms of medicine. The use of these medicinal plants and their ethnomedicinal uses are known only to the ethnic people and the tribes residing in different areas of Assam. The different herbal ingredients present in these medicinal plants may be used in the formulation of developing new medicines which may be proved as a blessing for mankind. The active ingredients present in these plants may be used for designing some new drugs and pharmaceutical agents which can pave some new alleys in the world of pharmaceutical sciences and be a blessing for mankind. Plant-derived pharmaceutical formulations used to treat diseases. Natural products derived from medicinal plants may be do not have any side effects till date if used in a limited and restricted dose. Some of the medicinal plants work unbelievably to cure from certain diseased conditions which has been reported by the ethnic respondent of Assam. The data received from the respondents interviewed were from different areas of Assam and it shows that medicinal plants play a very important role in the maintenance of healthcare among various ethnic communities in their daily life.

### Acknowledgements

We are very much grateful to Assam down Town University, Panikhaiti, Guwahati, Assam for providing necessary laboratory facilities. We acknowledge the State medicinal Plants Boards of Assam, State Drug Testing Laboratory, AYUSH, Govt. of Assam at Govt. Ayurvedic College, for providing help in carrying out this research work.

### Conflict of Interests

Authors declare that they do not have any conflict of interest

### References

1. Puspangadan P, Atal CK. Ethnomedicobotanical investigation in Kerala I. Some primitive tribals of Western Ghats and their herbal medicine. *J. Ethnopharmacology*,1984;11:59-77.
2. Mao AA, Hynniewta TM. Floristic diversity of North East. India *J Assam Sci Soc*,2000;41:255-66.
3. Mitra JN, Mitra D, Chowdhuri SK. *Studies in Botany*. Sri Gwitendranath Mounik,1992:1:1199.
4. Hynniewta TM. Ethnobotanical investigations of some tribes of Arunachal Pradesh. *Proc Second Annual workshop on MAB Project*, 1984, 83-7.
5. Bhattacharya PC, Muzumder R, Sarmah GCD. Rare medicinal plants of Assam. *Ancient Sci Life*,1991;10:234-8.
6. Saikia AP, Ryakala VK, Sharma P, Goswami P, Bora U. Ethnobotany of medicinal plants used by assamese people for various skin ailments and cosmetics. *Journal of Ehtnopharmacology*,2005;106:149-157.
7. Ghosh D, Parida P. Medicinal plants of Assam, India: a mini review. *Int J Pharmacol Pharm Sci*,2015;2:5-10.
8. Mao AA, Hynniewta TM, Sanjappa M. Plant wealth of Northeast India with reference to ethnobotany. *Indian J Traditional Knowledge*,2009;8:96-103.
9. Saikia AP, Ryakala VK, Sharma P, Goswami P, Bora U. Ethnobotany of medicinal plants used by Assamese people for various skin ailments and cosmetics. *J. Ethnopharmacology*,2006;106:149-157.
10. Mensah AY, Bonsu AS, Fleischer TC. Investigation of the bronchodilator activity of abrus precatorius. *Int J Pharm Sci Rev Res*,2011;6:9-13.
11. Taid TC, Rajkhowa RC, Kalita JC. A study on the medicinal plants used by the local traditional healers of Dhemaji district, Assam, India for curing reproductive health-related disorders. *Adv Appl Sci Res*,2014;5:296-301.
12. Das NJ, Saikia SP, Sarkar S, Devi S. Medicinal plants of North-Kamrup district of Assam used in the primary healthcare system. *Indian J Traditional Knowledge*,2006;5:489-93.
13. Hazarika R, Abujam SS, Neog B. Ethnomedicinal studies of common plants of Assam and Manipur. *Int J Pharm Biol Arch*,2012;3:809-15.
14. Lai Y, Lim YY, Kim KH. *Blechnum Orientale* linn-a fern with potential as an antioxidant, anticancer and antibacterial agent. *BMC Complementary Altern Med*,2010;10:15.
15. Kanjilal UN, Bor NL. *Flora of Assam*, (Omsons publications, New Delhi), Reprinted, 1997, 1-7.